

INSIDE THIS ISSUE:

Election Update 2020.....1
 Scheels at Eden Prairie Center2
 MN Marketplace 3-4
 Resources.....4
 Corporate Sponsors5
 Calendar of Events.....5



**MINNESOTA SHOPPING
 CENTER ASSOCIATION**

DECEMBER 2020

The Connection



ELECTION UPDATE 2020



by Sonnie Elliot,
 FAEGRE DRINKER

MINNESOTA SAW RECORD VOTER TURNOUT FOR THE NOVEMBER 3, 2020 STATE GENERAL ELECTION. An estimated 3,290,000 Minnesotans voted in the election; of these approximately 1,846,668 were absentee ballots. Of Minnesota’s eligible voters, 79.9% participated in the general election and that makes us #1 in the nation for voter turnout. The national average was 66.4%.

Despite predictions of a “blue wave” election, Minnesota’s elected offices remained much the same. Minnesota’s congressional delegation had only one change, former Republican State Senator and Lt. Governor Michelle Fischbach beat longtime incumbent Democrat Congressman Collin Peterson for the seat in the 7th Congressional District. Congressman Peterson had continued to win as a Democrat despite the 7th district voting Republican for president for the last decade.

There was no change in Minnesota’s House and Senate majority party control. The House remains DFL majority (70–64) and the Senate Republican (34–33). Although the margins tightened compared to the current biennium, all four caucus leaders were re-elected. The four caucus leaders elected were: House Speaker Melissa Hortman (DFL – Brooklyn Park), House Minority Leader Kurt Daudt (R – Crown), Senate Majority Leader Paul Gazelka (R – Nisswa) and Senate Minority Leader Susan Kent (DFL – Woodbury).

Over the next month, the leaders will decide on committee structure and who will chair those committees. Finally, all of the committee assignments will be completed prior to commencement of the legislative session on January 5, 2021.

“...79.9% participated in the general election and that makes us #1 in the nation for voter turnout.”

CLEANRESPONSE

DISASTERS DESERVE CLEAN RESPONSE

Protecting businesses isn't a sideline for American Family—it's a big part of who we are. American Family has been protecting the livelihoods of business customers like you for over 35 years. In fact, we're the **Top Commercial Insurer in Minnesota!** Our strength allows us to offer a broad range of high-quality products and services at competitive prices. As an American Family agent, and a business owner, I have knowledge of your insurance needs, as well as the responsibilities and challenges you face. Whether you own residential, office, industrial or retail property we'll focus on keeping your business protected so you can focus on keeping your properties competitive in the market.

* Based on Commercial Multi-Peril direct premiums written, according to a 2013 report by SNL Financial.

Fost Choles Agency Inc
 (952) 224-2992/ fcholes@amfam.com

American Family Mutual Insurance Company, S.I., and its Operating Companies, 6000 American Parkway, Madison WI 53783



Scheels at Eden Prairie Center



by Johnny Reimann,
MID-AMERICA REAL ESTATE –
MINNESOTA, LLC

THE NEW 2-LEVEL, 200,000 SQUARE FEET SCHEELS IS A BRICK AND MORTAR PARADISE, WITH IN-STORE EXPERIENCES IN DROVES. Leaving your car, the store's entry is flanked by tasteful landscaping, bronze sculpture and what I'll call the "Scheels Mount Rushmore" of Lincoln, Jefferson, Washington and Reagan. Visual details don't end there, from the aquarium archway at checkout, to life sized John Randle and Herb Brooks displays and full sized Ferris wheel at center of it all, you

can't get this type of experience with mouse clicks. Not to mention the store's depth of fashion apparel, licensed apparel and merchandise, home décor, on-field and outdoor sports and recreation means you can make the drive knowing you'll find whatever you need in one place (and sized right). We all wonder which retailers will have staying power in the pandemic world and beyond, and this would seem to check all the boxes.



Contact
Tom Heuer
612.884.8000

AGGRESSIVE
STRATEGIES
LOWER TAXES

Are you paying more than your fair share of property taxes? Let us take a closer look to see if we can assist you in getting a substantial reduction.

Call Tom Wilhelmly or Judy Engel at 612.492.7000

Fredrikson
& BYRON, P.A.

WHERE LAW AND BUSINESS MEET®
fredlaw.com/propertytax

MSTX021220



MN Marketplace

▶ **POOR RICHARD'S COMMONHOUSE** is now **CW'S BAR & GRILL** in Bloomington.

▶ **BRICK AND BOURBON** opening late fall early winter with their second location, **FIVE GUYS** and **GENT SALON** both recently opened at Elevate at Southwest Station in Eden Prairie.

▶ **SMILE ORTHODONTIST** opened in St. Paul in the Highland retail area.

▶ **AMAZON** expects to open a 750,000 square foot fulfillment center in Lakeville next summer. This would be the second center to be built in Minnesota. The facility will be used to pack oversized items such as mattresses, grills and exercise equipment.

▶ **US BANK** is converting a former Taco Bell on Larpenteur to a branch location in Roseville.

▶ **HARBOR FREIGHT** opened its 11th location in Minnesota in Virginia with a 15,000 square foot space in the Uptown Virginia Mall, formerly the Thunderbird Mall on Highway 53.

▶ **CYCLE GEAR**, one of the country's largest retailers of motorcycle parts and apparel, has opened a 5,322 square foot space in Southdale Center. This is one of the brand's first locations in the state.

▶ The **APPLE** store in Uptown will close permanently. Other stores not opening include **COLUMBIA SPORTSWEAR** and **NORTH FACE, SUSHI TANGO, MAC COSMETICS**. Long a go-to spot in Uptown, **CHINO LATINO** closes. Calhoun Square in Uptown gets new name, **SEVEN POINTS**.

▶ **DUNKIN** is gearing up to test an Amazon Go-style store in California with its checkout-free pilot program without interacting with anyone or scanning anything at a kiosk.

▶ **RUBY TUESDAY** files for Chapter 11 bankruptcy.

▶ Plymouth's first brewery and taproom, **LUCE LINE BREWING CO.**, recently opened.

▶ Local restaurant owner, Kim Bartmann revises famed **CAFE WYRD**.

▶ **KASKAID HOSPITALITY, INC.** plans to use Crave's metro locations as the launching pad for a new burger-centric ghost-kitchen concept called **TOASTY BUNS** with delivery only service.

▶ Places we will miss: **THE BACHELOR FARMER, MARVEL BAR, IN BLOOM, BELLECOUR, BUTCHER & THE BOAR, SURLY BREWING'S BREW HALL** and **PIZZA UPSTAIRS, MOOSE & SADIES**.



by Lisa Diehl,
DIEHL AND
PARTNERS, LLC



by Holly Robinson,
MID-AMERICA REAL
ESTATE – MINNESOTA, LLC



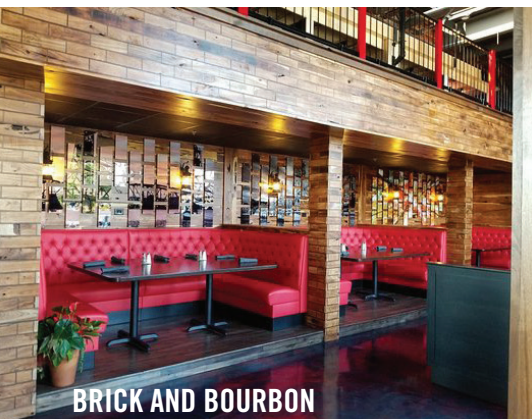
by Jesseka Doherty,
MID-AMERICA REAL
ESTATE – MINNESOTA, LLC

▶ Maybe open/coming soon: **BULL AND FINCH PUB, EL TRAVIESO TAQUERIA, SOOKI AND MIMI, PETIT LEON, VINAI, VIVIR, COQUETTE AND COLIBRI**.

▶ A U.S. judge approved a deal to rescue **JCPENNEY CO. INC.** from bankruptcy proceedings averting a liquidation that would have put the beleaguered department store chain out of business and jeopardized tens of thousands of jobs. Mall operators Simon Property Group and Brookfield Property Partners will acquire the company's slimmed-down retail operations for \$1.75 billion in cash and debt.

▶ **ERIK'S BIKE SHOP** relocates headquarters to Minneapolis.

— continued on page 4



BRICK AND BOURBON



HARBOR FREIGHT



ERIK'S BIKE SHOP

▶ **PETCO ANIMAL SUPPLIES** may go public, again!

▶ **PEACE COFFEE** closes all three locations and will focus on selling to retailers.

▶ **PIER 1** is relaunching as pure-play e-commerce retailer.

▶ Fresh-baked and home-delivered, **CRUMBL COOKIES** has opened a location in Apple Valley adjacent to Target. Look for additional locations throughout the Twin Cities.

▶ **ULTA BEAUTY** will open hundreds of shops inside Target stores next year.

▶ Longstanding sports bar and scratch kitchen restaurant, **CHAMPPS**, has permanently closed in Minnetonka at Ridgedale. **THE PURPLE ONION CAFÉ AND CATERING** on University Avenue has also closed. As has **SUSHI TANGO** on Hennepin Avenue in Minneapolis.

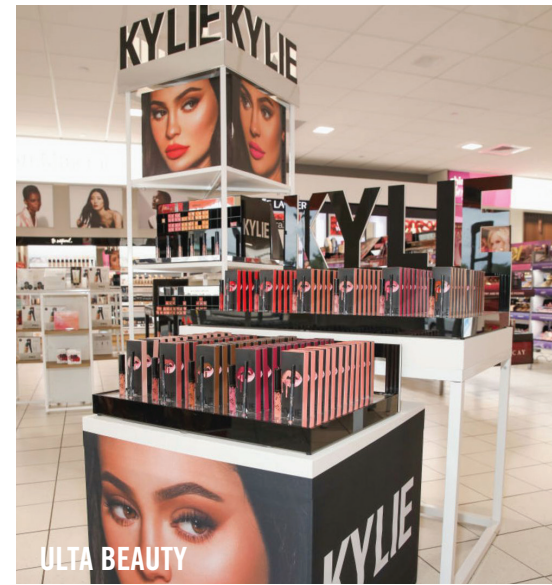
▶ **HIGHLANDER GAMES** is a community focused tabletop gaming store opening a new location in Coon Rapids.

▶ **BLUESTAR ALLIANCE** has signed an agreement to acquire the tween brand, **JUSTICE**, from Ascena Retail Group for \$90 million. Ascena continues to operate its Ann Taylor, Loft, Lane Bryant and Lou & Grey brands. Bluestar is a brand management and marketing company whose brand portfolio includes Hurley, Bebe, Tahari, Brookstone, Limited Too and others.

▶ Minneapolis Farmer’s Market vendor, **NORTHERN FIRES PIZZA**, is opening a year-round takeout-only set up at 42nd Street and Cedar Avenue in South Minneapolis.

▶ A new **DUNKIN’** coffee shop is leading the makeover of the Valley West Shopping Center in Bloomington replacing an old Goodyear Tire store and a portion of a former Planet Fitness space.

▶ **DOLLAR GENERAL’S** concept called **DGX**, will anchor 6,000 square feet of space in the Andrus Building in downtown Minneapolis and will open in 2021. This will be the first of this concept to enter Minnesota.



HAVE YOU SEEN?



Hy-Vee has implemented an automated system to sanitize shopping carts. Hy-Vee is taking store sanitizing amid the pandemic to the next level.

WELCOME NEW MEMBERS

- ASHLEY GUNDERSON..... Hennepin County
- JASON PINSKI..... Shingobee
- ANTHONY BASDEN,..... Gausman & Moore
- JAMIE JOHNSON,..... Wings Financial Credit Union

RESOURCES

THE MUSICANT GROUP has authored two new free resources to support main streets, downtowns and public spaces this winter:

- **WINTER ACTIVATION COVID TOOLKIT** can be downloaded at: <http://www.musicantgroup.com/covid.html> (great for tactical implementation)
- **WINTER ACTIVATION STRATEGIES** article for The American Downtown Revitalization Review (perfect for strategizing and loaded with tips and tricks): <https://theadrr.com/>



MSCA PHILANTHROPIC CHARITY OF CHOICE

THANKS TO THE GENEROSITY OF MSCA MEMBERS, AND MEMBER COMPANY HJ DEVELOPMENT, WE DONATED OVER \$10,000 TO THE OPEN ARMS OF MINNESOTA TURKEY DRIVE!

MSCA WOULD LIKE TO THANK OUR 2020 CORPORATE SPONSORS!



Allied Blacktop Company
Aspen Waste Systems, Inc.
Barna, Guzy & Steffen, Ltd.
Bell Bank
Braun Intertec
Bremer Bank
CBRE
Clean Response
Colliers IMinneapolis-St. Paul
CSM Corporation
Cushman & Wakefield
Cutting Edge Property Maintenance
Doran Companies
Dorsey & Whitney LLP
DryTech Restoration and Construction
Faegre Drinker
Fendler Patterson Construction, Inc.
Flynn Midwest LP
Fost Choies Agency Inc. —
American Family Insurance

Gausman & Moore Mechanical
and Electrical Engineers
Great Clips, Inc.
Great Southern Bank
Grindstone Construction Services
Guaranty Commercial Title, Inc.
HJ Development
Interstate Companies
Johnson Financial Group
Kimley-Horn
Kraus-Anderson Companies
Larkin Hoffman
Launch Properties
The Mandinec Group Landscaping Inc.
Maple Crest Landscape
Mid-America Real Estate - Minnesota, LLC
Midwest Maintenance & Mechanical, Inc.
Oppidan, Inc.
Prescription Landscape

Quality Trusted Commercial
Construction & Roofing, Inc.
Ridgedale/Brookfield Properties
RMA Real Estate Services, LLC
RPT Realty
RSM US LLP
Rochon
Ryan Companies US, Inc.
Smith Gendler Shiell Sheff Ford & Maher
Target Corporation
TCF Bank
Trautz Properties, Inc.
U.S. Bank National Association
United Properties
Weis Builders, Inc.
Westwood Professional Services
Wings Financial Credit Union

REGISTER FOR THESE 2020 CALENDAR EVENTS

DID YOU KNOW: YOU CAN VIEW THE LIST OF ATTENDEES TO ANY OF OUR EVENTS IF YOU CLICK ON THE EVENT?

EVENT	VENUE	DATE
2020 YEAR END CEREMONIES	WEBINAR	12/01/20
2020 STARR _{SM} AWARDS	WEBINAR	12/08/20

MSCA WILL CONTINUE TO MONITOR CONDITIONS AND MAKE EVENT UPDATES AS NECESSARY. PLEASE CONTINUE TO CHECK THE CALENDAR OF EVENTS FOR UPDATED DETAILS.
WWW.MSCA-ONLINE.COM/EVENTS/CALENDAR/DATE/2020-12